

This is how we'll be working on getting you back to work

Personal guidance during illness and absences



**MAAK
WERK VAN
VERZUIM** ✓



Ill and not able to go to work? Nobody wants that, right?

Everyone wants to feel good and stay healthy. But occasionally being ill is obviously part of life. And sometimes you may not be able to go into work because you're ill. Is that what's happening to you? Then the Sectorinstituut Transport en

Logistiek (STL) can give you the help you need. Especially because you work within the transport and logistics sector. So you'll always be given the kind of advice and help you really need. We will help you get back on your feet in no time at all.

STL's absence guidance

These are the benefits

- ✓ Help and assistance when you can't go into work
- ✓ It's always about you
- ✓ Your privacy is guaranteed
- ✓ Help to get better faster
- ✓ Focus on a long-term return to work
- ✓ Tips to carry on working and stay healthy for as long as possible
- ✓ Advice specifically suited to your job

Are you not able to go into work because you're ill? These people are here to help you.

Company Nurse Practitioner

The Company Nurse Practitioner (CNP) is your contact person from STL when you are ill. You can discuss what you need to get better with him or her. Making sure you'll soon feel healthy and ready to get back to work!

Company doctor

The company doctor from STL will assess your medical situation and provide you with personal advice. He or she is responsible for helping you while you're ill.

We are here to help. Even when you're not sick!

Any questions?

Open consultation

Do you have any questions about your health and work? You can still ask your company doctor during an open consultation, even if you're not actually ill. This can be completely anonymous too, so your boss doesn't need to know anything about it. This means you don't need permission to go and see the company doctor.

Have you gone through something traumatic?

Ask for help

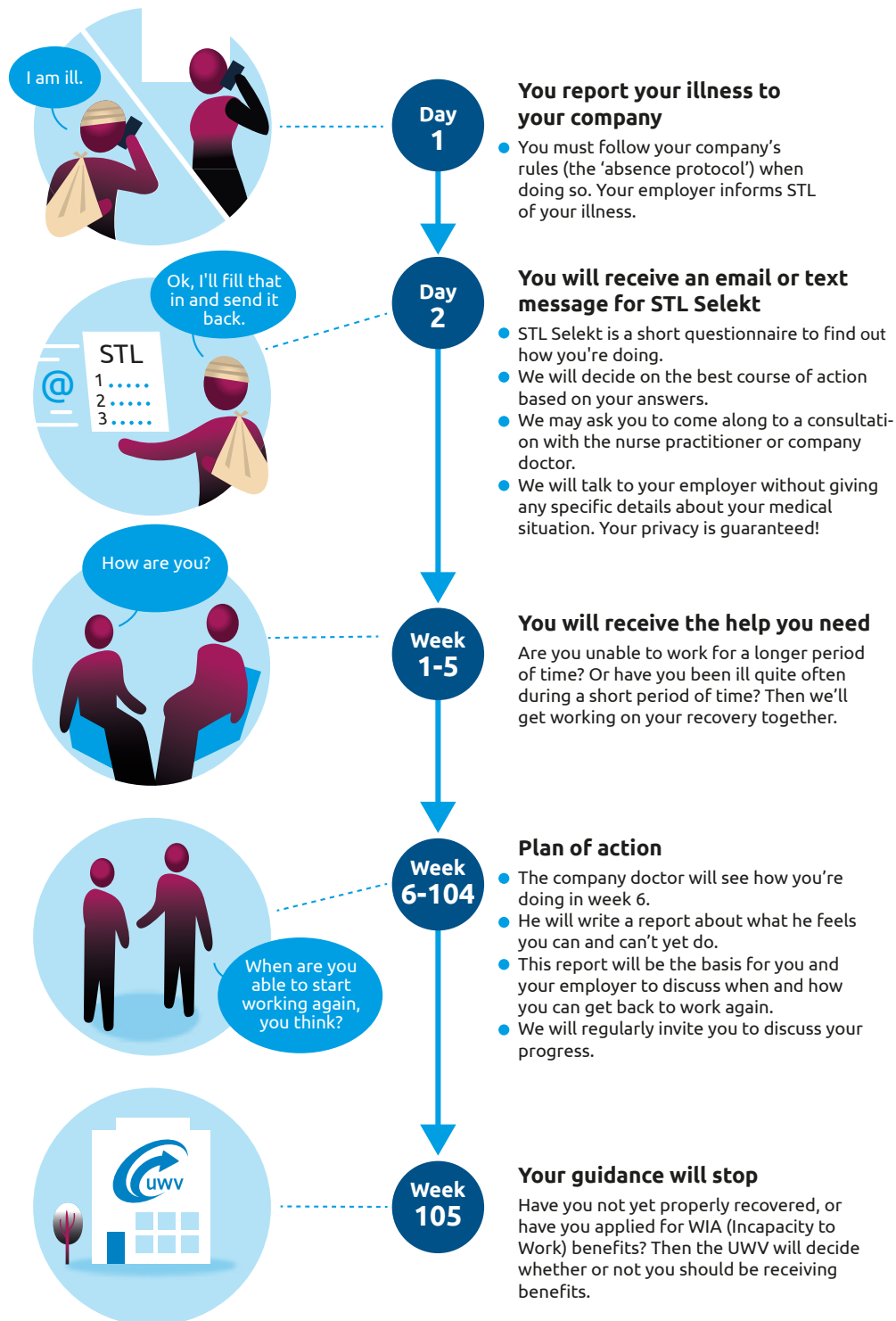
Has something terrible happened? We are ready to assist 24 hours a day via 0800-6001. You will be given any professional care and aftercare from STL you may need.

Not sure about the advice?

Ask for a second opinion

Are you not sure about the advice the company doctor has given you? Then you always have the option of asking a different company doctor for a 'second opinion'. Would you like to use this option? Then tell your company doctor. He or she will make an appointment for you with another company doctor.

Our absence guidance This is what will happen!



WOULD YOU LIKE MORE INFORMATION ABOUT ABSENCE GUIDANCE FROM STL?

Visit www.stlwerkt.nl/verzuim or get in touch with us!



Sectorinstituut
Transport en Logistiek

Visiting address
Kampenringweg 43
2803 PE Gouda

Mailing address
Postbus 308
2800 AH Gouda

During office hours
088-2596111
verzuim@stlwerkt.nl

